

# Windchill® Workgroup Manager for Autodesk® Inventor™

Delivering the power and benefits of Windchill to the Autodesk Inventor environment

With Windchill managing Autodesk Inventor data, designers can perform everyday design tasks in their familiar MCAD environment, while leveraging the powerful process and content management capabilities of Windchill to manage the resulting design data throughout its lifecycle.

Managing Autodesk Inventor data within Windchill allows you to capture and control all your design information within a single enterprise environment, manage the data under a single product structure, and easily leverage that information across the extended organization in a controlled manner.

## Key Benefits

### Improve Collaboration

- Integrate the Autodesk Inventor design environment with the wider enterprise in terms of business processes and procedures
- Extend the sharing of design data beyond engineering departmental and corporate boundaries using standard Internet technology

### Improve Data Quality

- Eliminate mistakes associated with duplicate or incomplete data by managing data from multiple CAD systems in a single, controlled location under the umbrella of a single product structure
- Centralize the management of business processes, such as release procedures and change control
- Provide all relevant groups with accurate, up-to-date, relevant product content information that's held in a single location

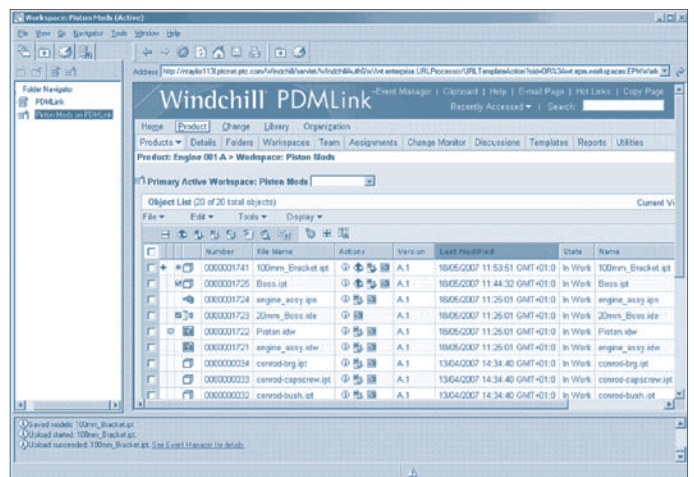
### Improve Engineer Productivity

- Increase operating efficiency by reusing design data and reducing the number of design steps
- Embed Windchill actions within the Autodesk Inventor application, enabling designers to focus on design activities rather than data management

- Minimize engineer interruptions by utilizing background processes to upload files to Windchill, thus allowing the designer to continue using Autodesk Inventor without having to wait for database actions to complete

### Increase Enterprise Efficiency

- Reduce the number of systems required in product development by providing a system that can manage multiple sources of data (e.g., different CAD and documentation formats)
- Enforce standard design processes across multiple design projects and organizations



The Windchill Workgroup Manager for Autodesk Inventor understands Autodesk Inventor data and file types, and the relationships that can exist between that data.

## Features

### Support Key Autodesk Inventor Data and Features

In order to manage Autodesk Inventor data effectively, Windchill Workgroup Manager recognizes and supports certain features specific to the Autodesk Inventor design tool, thus enabling users to:

- Recognize and store different Autodesk Inventor file types in Windchill, including: .ipt, .iam, .idw, .ide, .ipn and .ipj
- Recognize relationships and dependencies between Autodesk Inventor files (e.g., between parts, assemblies and drawings), and represent those references in the Windchill environment

## Features

### Support Key Autodesk Inventor Data and Features (cont.)

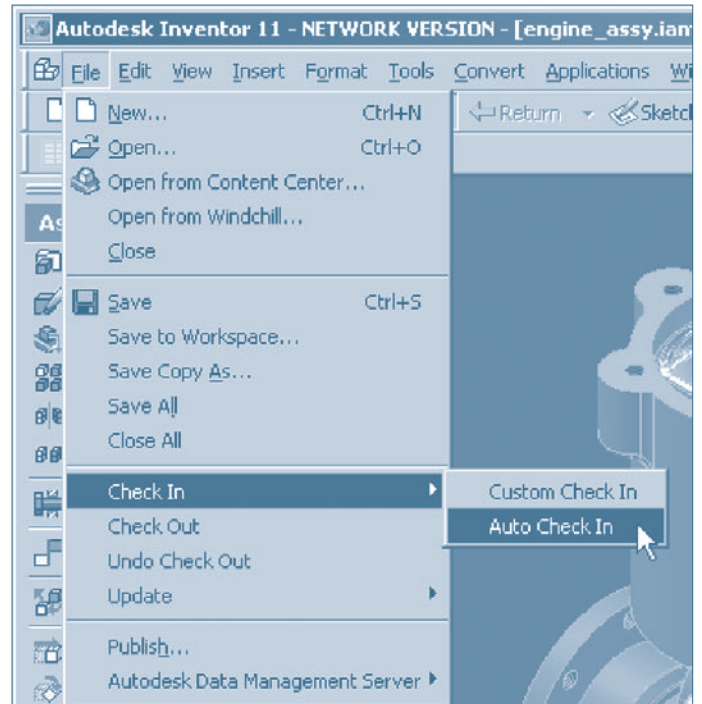
- Automatically associate files related to the Autodesk Inventor drawing, such as images, DXF files, and spreadsheets
- Open files directly in Autodesk Inventor when browsing or searching the Windchill database
- Automatically manage local working directories with the Windchill Workgroup Manager
- Manage Autodesk Inventor iParts
- Copy or rename data in the Windchill environment while still maintaining referential integrity between Autodesk Inventor files
- Use native Autodesk Inventor icons to make Autodesk Inventor data easily identifiable in Windchill

### Exchange Attribute/Property Information between Autodesk Inventor Files and the Windchill Environment

- Expose Autodesk Inventor attributes to Windchill for searching purposes
- Make Windchill attributes available within Autodesk Inventor for purposes such as displaying values on drawing borders
- Allow Autodesk Inventor attributes to be edited in the Windchill environment
- Eliminate the need to enter attributes in both the Windchill and Autodesk Inventor environments
- Reduce the amount of time designers spend entering information in Autodesk Inventor by having certain attributes, such as information on drawing borders, automatically populated by Windchill

### Integrate the Autodesk Inventor Environment within Windchill and Its Related Enterprise Processes

- Utilize Windchill tools to manage Autodesk Inventor data within the product structure, development process and lifecycle
- Enable Check-In and Check-Out of named design baselines, latest configurations, or criteria such as latest released configuration or effectivity date
- Manage Autodesk Inventor data within the Windchill engineering change management process



Embedded Windchill Workgroup Manager menu option within the Autodesk Inventor environment.

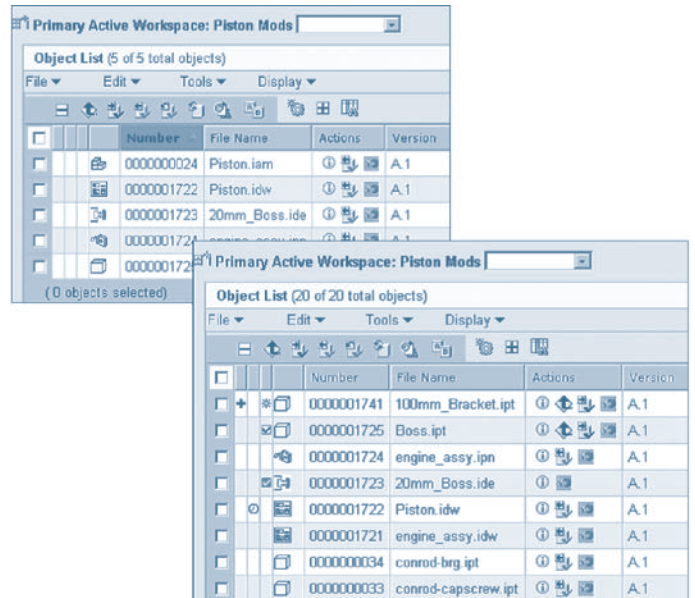
- Eliminate BOM redundancy and errors by synchronizing the enterprise BOM with the Autodesk Inventor structure
- Allow Autodesk Inventor data to be part of an enterprise BOM structure that can contain data from many different CAD systems
- Enable version control on Autodesk Inventor data to record complete traceability of changes and design development
- Enable concurrent development, as Windchill can track all related activities and convey that information to other members of the design team
- Utilize status icons to quickly inform Autodesk Inventor designers and other users about the condition of Autodesk Inventor data within Windchill

### Embed Windchill in the Autodesk Inventor Application

- Open Autodesk Inventor files, stored in Windchill, directly from Autodesk Inventor
- Perform key Windchill actions, such as Revise, Check-In and Check-Out, from the Autodesk Inventor environment
- Inform Autodesk Inventor users on any relevant Windchill events via pop-up messaging system
- Upload Autodesk Inventor files to the Windchill database using background processes
- Use a comprehensive set of preferences to personalize and streamline your Autodesk Inventor interaction with Windchill

### Exchange and Share Design Data in a Collaborative Environment

- Provide a single source of product information, and leverage design information outside of the design environment
- Enable controlled sharing of Autodesk Inventor data across the enterprise
- Utilize generic visualization collaboration tools (plus optional Theorem adapter) to provide visibility of Autodesk Inventor designs to the entire enterprise, regardless of whether the user has access to or knowledge of Autodesk Inventor
- Make Autodesk Inventor design data available to external audiences having proper system access



Employ native Autodesk Inventor icons and file types as well display different status icons within Windchill.

### Platform Specifications

- Prerequisite:
  - Windchill® PDMLink®, Windchill® ProjectLink™
- Operating Systems
  - Microsoft Windows (32-bit): XP
- Browser: Internet Explorer v6.0 and 7.0
- Languages: English, Chinese (Traditional), French, Japanese

For the most up-to-date platform support information, please visit: [www.ptc.com/partners/hardware/current/support.htm](http://www.ptc.com/partners/hardware/current/support.htm)

NOTE: The timing of any product release, including any features or functionality, is subject to change at PTC's discretion.

©2007, Parametric Technology Corporation (PTC). All rights reserved. Information described herein is furnished for informational use only, is subject to change without notice, and should not be construed as a guarantee, commitment, condition, or offer by PTC. PTC, the PTC logo, Windchill and all PTC product names and logos are trademarks or registered trademarks of PTC and/or its subsidiaries in the United States and in other countries. All other product or company names are property of their respective owners.